



## Aspen French M25-1a

Formal shirt long/short sleeves. Can be tailored in different choice of colours and have a privilege to choose the variety of fabric from oxford, soft washed twill and gabadin poly viscose. These can be with or without button down collar, chest pocket. A matching tie can be supplied along, which is optional.



# Utility M25-2a

Men's reversible jacket. Outside and inside in 100% ultra light weight recycled nylon blend. Raised collar in self fabric with rib details at the top. Side pockets with hidden snap buttons. Bottom and cuffs in rib with matching colors outside and inside.



WEAR BOTH WAYS  
IN & OUT

REVERSIBLE  
JACKET





### Flipside M25-3a

Elevate your style with this sleek and versatile Flipside Jacket. Available in classic black/grey for both men and women, this jacket combines sporty aesthetics with comfort. Made from 100% lightweight polyester, it offers the perfect balance between durability and breathability, making it ideal for any season.



WEAR BOTH WAYS  
IN & OUT

REVERSIBLE  
JACKET



### Wind Breaker M25-3b

This lightweight windbreaker is water resistant made of micro polyester fabric, with zip front closure. Soft to the touch, versatile, and great for layering. This lightweight windbreaker is great for all weather conditions. Can be tailored with a scuba neck, welt pockets and with padding to handle chilly winters. Reflective tapes are optional for safety. These can be made, with or without hood.

Available in six colors Including two special reflective shades



# Esquire M25-4a

Our Monster Esquire Fleece is made with combed cotton fleece that has a smooth exterior and lofted brushed cotton interior surfaces. This construction yields a layer that is very wind-resistant while remaining breathable, dries quickly, and is quite warm. With an exterior that's knitted with heavier-gauge 100% cotton yarns than the typical soft-shell fleece, its abrasion resistance is exceptional to perform season after season. Stretch construction enables better movement in every direction. The drawcord-adjustable hem seals in warmth and provides a custom fit. Hand pockets are lined with microfleece for comfort and warmth. These can be crafted as full or short sleeves with or without a hood depending on your requirements. Special 3-ply fabric, 290gsm suitable for all seasons.





## Long Sleeve Crew M25-5a

Long sleeve design crewneck with ribbed sleeve cuffs. Materials: 100% cotton that's smooth exterior and lofted brushed cotton interior surfaces. These can also be tailored in various pattern as per your requirements. Material suitable for all seasons 3ply, 290gsm.



## Puffer Vest M25-5b

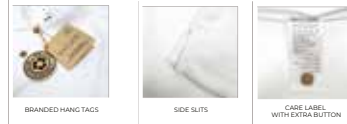
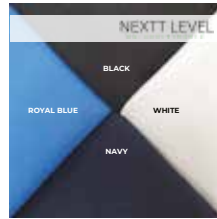
Regular Puffer Vest is made of 100% recycled polyester with zipped side pockets and wind protection. Crafted in a monochrome design, the vest is in regular fit with padded body. This is a perfect winter must-have. Available in black and grey colors



# Supreme Sustainable M25-6a

Supreme Comfort Sustainable polo shirts that are crafted using 100% recycled polyester sourced from 10 RPET bottles. Not only do they look great, but they also help reduce plastic waste and promote a cleaner environment. These remarkable polo shirts are truly eco-friendly. Super luxurious soft fabric with ultra-soft feel enhances the wearing experience, ensuring a pleasant sensation with every touch. The packaging features compostable poly bags made from IS/ISO 17088 approved materials. Redefining eco-friendly packaging, these bags align with global standards

Available in four colors.



# Godolph M25-6b

Premium Golf Polo. Crafted in pre-dyed yarn with high quality jacquard collar. The collar band and placket in yarn dyed is tailored in biased contrast stripes matching to body.



Anthra

Purple  
Toned Burgundy

Beige

Sky Blue





## KoolTex M25-7a

Introducing the Kooltex Men's Polo t-Shirt - a perfect blend of style, comfort, and performance for the modern man. The Cooltex Men's Polo T-Shirt offers a timeless and sophisticated look. The short sleeves provide enhanced breathability fabric which protects the skin from harmful UV rays and freedom of movement, while the modern fit ensures a flattering silhouette. This versatile polo shirt is designed to keep you looking sharp and feeling cool and fresh throughout the day, whether you're on the golf course, in the office, or enjoying a night out. The sweat absorbent feature keeps the body dry and comfortable; it pulls the moisture away from the skin to the surface of the fabric. The Key Feature of the fabric is that it is constructed in a way where the inside of the fabric worn next to the skin is predominantly cotton and the outside is polyester. This, therefore, combines the comfort of cotton with the hardwearing properties of polyester. The salient features of Cooltex material include: Easy care, Wickability, Breathability, Softness, Shape Retention, Quick Drying, Total Comfort, and UV Protection



## TechnoKool M25-7b

TechnoKool Polo T-Shirt are instantly smarter and more professional looking when compared to a crew neck t-shirt. The collar detail, ribbed cuffs and button down detail make an instant impression and they don't cost much more than the crew neck t-shirt we supply. This dri fit fabric keeps you light, feels like second skin. Ultra-Fresh Odour-free Technology. Sun protection UPF 50+. Good moisture absorption & fast-drying capability. Lightweight and High mechanical stretch. These basic yet chic classic TechnoKool 100% Performance Dry Pique Polo by Monsters are extremely important for a closet that speaks the language of fashion. Grab your shades under the sun rocking out this polo with your joggers and sneakers.





## Caribbean M25-8a

The Caribbean is 100% Polyester Polo. Using special technology this fabric pulls out the moisture away from the skin to the surface of the fabric for quick evaporation, which keeps your body dry and comfortable.



Navy



Black



White



Medium Blue



Red



Blue



Grey

## Interlock M25-8b

Interlock double-knit fabric is a variation of rib knit. The rows become "interlocked" as the fabric is knitted. While the construction of interlock fabrics makes the fabric feel very firm, it also has a soft and smooth texture. The thickness of the fabric makes it very absorbent as well, to give it the most optimal characteristics, such as breathability and softness, natural fibers are preferred. The most common natural fibers to make interlocks are cotton and wool. You can also find interlock fabric made of polyester, rayon, and modal, but these aren't as common as wool and cotton. 100% cotton is an eco-friendly fabric choice for interlock knit fabric. Cotton is soft, comfortable, breathable, and has a certain level of stretch to it. It is usually used for summertime clothing. These can be tailored with plain collar cuff or jacquard collar cuff





# Performance M25-9a

Seamsoft 100% cotton performance polos. Fuller cut that sits comfortably on your skin. Seamsoft textured fabric that wicks sweat and dries fast. It's soft, light and breathable with an anti order technology. These bespoke polos can be customized as per your requirements. Available in 220 and 240 gsm.



# Tropikana M25-9b

The subtle combinations of corporate colors on sleeves, collar, placket & pocket give a modern, stylish, yet corporate look to this polo.



White - Red / Navy



Black - Red / Grey



Navy - Red / Grey



Grey - Navy / White



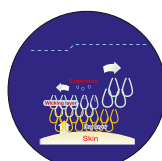
Patchless concealed pocket



Side slits with bartack



Tagless Label



Dryncool Mechanism

## PowerMove Reglan M25-10a

Unlock your Gains, Seamlessly. Go all-in with our PowerMove Reglan Sleeve Tees by Monster. These tees are made from durable materials and feature a classic reglan sleeve design that is both functional and fashionable. PowerMoves are designed this way, which also makes it easier to lift your arms as required without any restriction. This extra movement also makes the garment extremely comfortable to wear.



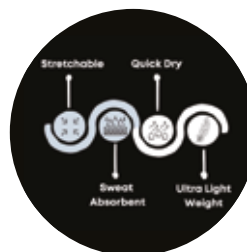
## Crew M25-10b

Single jersey 100% ring spun combed cotton fabric, enzyme finish for a soft and smooth touch. 180 gsm



## Dry&Cool Crew M25-10c

Light dry fit polyester tees. These regular tees are short-sleeved sportswear. We can print names, and numbers at the back or full-color branding. Available in various colors



## Gear Jersey Polo M25-11a

The shirt is made of high-quality polyester and is meant to keep you cool and dry all day. The fabric breathes well, letting air move freely and reducing perspiration accumulation. Moreover, polyester's moisture-wicking characteristics guarantee that the shirt absorbs moisture fast, keeping your skin dry and comfortable. Can do full-color branding, an image of the text from top to bottom fully customized.



## Apron M25-11b

Unisex Kitchen Apron made of recycled nylon. It can be crafted with or without pockets as per your requirements and styles.



## Easy Pants M25-12a

Easy Pants are made of recycled polyester fabric with a durable water-repellent finish. The fabric is smooth and comfortable to the touch and can be worn comfortably even during the sweaty season. These easy pants can be worn comfortably for indoor and outdoor activities. These can be tailor-made as per your requirements along with cargo options.



## Work Pants M25-12b

This style is perfect for men and women who work in the industrial, commercial, health, construction and mining industries. Crafted in 290gsm twill fabric with 2% spandex to give a soft finish. Pre-Shrunk. UPF 50 + excellent compliance rating. Made to withstand heavy duty work. All garments and fabrics are rigorously tested for high quality. Straight leg cut, can be tailored with or without reflective tapes and cargo pockets. Standard sizes with adjustable elastic waists.





## Core Shorts M25-13a

Core men's shorts offer a modern, versatile addition to your activewear. Available in white, black, grey, olive green, florescent yellow, and orange. These shorts are crafted from smooth, recycled polyester with a water-repellent finish. They are lightweight and breathable too. They provide comfort and freedom of movement for any activity pair with a t-shirt or hoodies for a complete stylish look.



## Comfy M25-13b

Summer collection cotton shorts. 100% combed compact cotton. Bio wash, comfortable and extra soft feel with elastic waist and side pockets.



all colors



## Gentleman M25-14a

Gentleman hats come in different varieties. Fedoras is probably one of the most polarizing men's accessories. Today the felt firm-brimmed hat is once again on-trend and a fantastic wardrobe addition. Although fedoras come in various sizes and colors, we would suggest sticking to those with more neutral tones and medium widths. Despite often being confused with a fedora, a trilby is a different type of hat. Made from 90% Natural fiber, the Trilby features a smaller brim and taller crown than the fedora, meaning you can wear it from spring to autumn. Wear the trilby at the back of your head, instead of pulled forward to protect your face. It is a statement fashion piece rather than a functional hat. These are the hats of choice for boy band members, such as Justin Timberlake, as well as members of the upper class, and are frequently spotted at horse racing events around the world.



## Panama M25-14b

Women's Wide Brim Summer Hats. These can be supplied in Sun Toast Straw, and Natural Hemp Straw. Jute, Suede and foldable roll-up floppy material.





## Nu-Fit® M25-15a

Nu-Fit® Performance Caps are a premium quality 6-panel constructed pique mesh spandex fitted cap, utilizing the patented Stretch-Fitting technology from Nu-Fit®. Stretch fitting by Nu-Fit® has excellent shape retention even after multiple uses and one size fits all. The pique mesh knit provides air ventilation, and spandex provides sweat absorption. Santhome Nu-Fit® Performance Caps are an excellent premium cap/sports cap/outdoors/baseball cap.



Navy blue/White sandwich



Red/Black sandwich



Black/White sandwich

## Spantretch M25-15b

Spantretch is a structured six-panel premium cap with a stylish heavy ribbed double jersey knit structure, curved visor and a pioneering silent adjustable velcro mechanism. Made from 97% GRS-certified recycled polyester and 3% spandex for a great stretch-fit.



Black



Red



Navy Blue



Dark Blue



Royal Blue



White



Sky Blue



Beige



Grey



Silent Velcro

## Malta M25-16a

Malta Cap is an innovative performance cap made of lightweight athletic fabric, stretch-fitted sweatband DryNCool® moisture-wicking technology. Malta is an all-rounder - suitable for indoor or outdoor activities. Made of 95% polyester with 5% spandex for stretch-fit. One size fits all. The branding technique is embroidery. Max embroidery size: 45\*35 mm



White



Navy Blue



Green



Grey



Black



Marine Blue



## Solish M25-16b

A comfortable cap made from high-quality mesh material with a self-fabric binding around and a tri-glide buckle. Comes with metal eyelids.







## Grayto M25-17a

6 panel High Quality Cap, soft, durable and comfortable to wear. With an adjustable metal buckle for easy head adjustment. Material: Lycra 93% polyester, 7% spandex material. One size fits all.



## Flock M25-17b

A comfortable cap made from high quality mesh material with a matte black buckle



## Acro M25-18a

6-panel high-quality cap with silver brass buckle for head adjustment. Material: 100% Acrylic Fabric. Size: One Size Fits All.



## Brea M25-18b

6-panel High Quality Cap with unique hole design for breathable head experience. With velcro closure for head adjustment. Material: Ottoman Fabric - 100% Polyester. Size: One Size Fits All.

Grey



Blue



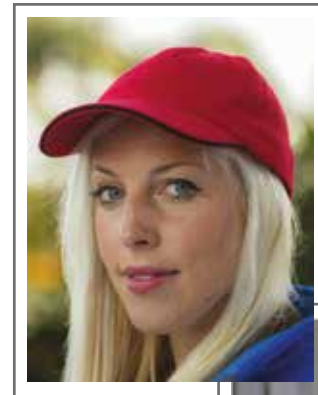
Black





## Ottoman M25-19a

4 panel ottoman cap with flexible fit band. Suitable for heat transfer printing and embroidery. Available in black and blue colour.



## Headwear M25-19b

A simple and comfortable cap suited for everyone. This 6-panel cap has a curved visor, embroidered eyelets for ventilation, and a metal buckle. Sunwear is made with the use of genuine recycled fabric materials and water reduction impact claims are guaranteed by using blockchain technology. This cap has saved 387 liters of water. Cotton twill made of 100% recycled materials. Size 58cm.



## Brushed M25-20a

Plain heavy brushed cotton caps. With an adjustable buckle in various colors.



## Contraster M25-20b

Heavy brush cotton caps with contrast peak and an adjustable buckle.



## Visor M25-20c

Complete your look with this structured five-panel heavy brushed cotton promotional cap in 100% cotton twill with adjustable metal buckle and curved visor.



## Ottocro M25-20d

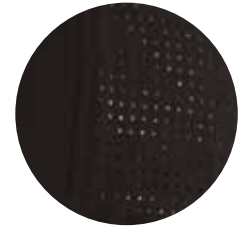
6 panel High Quality Cap With velcro closure for head adjustment. Material: Ottoman Fabric - 100% Polyester. Size: One Size Fits All.





## ACE M25-21a

Ace is a structured-fitted five-panel sports cap with DryNCool proprietary moisture management, adjustable metal buckle, and curved visor. Fine lasered holes on the side and back add ventilation and keep you cool and comfortable in the sun, or while playing sports. Classy and sporty design.



## Genex M25-21b

Genex is a performance visor made from lightweight athletic fabric with our proprietary DryNCool® moisture-wicking technology with adjustable velcro. Made from 95% polyester and 5% spandex.



## Snap M25-21c

Snap hat is a cool trendy look. Made extremely high quality. Logos are embroidered for a polished look. The hat bill is made with a curved style. Crafted with polyester / hard mesh material. 5-panel construction. Snapback closure.



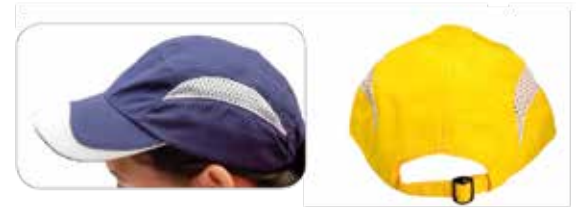
## Beanie M25-22a

Unisex knitted beanie in soft stretchable RPET polyester with rolled up cuff. Stay warm and comfortable during the cold winter days with this soft beanie. Made from recycled PET, this beanie is a thoughtful and sustainable choice.



## Vent M25-22b

A soft micro-fiber cap with a breathable mesh vent and a mesh design at the peak. Comes with an adjustable buckle.



## Vento M25-22c

A high-quality cap made from polyester material with a self-fabric binding around and a tri-glide buckle.

